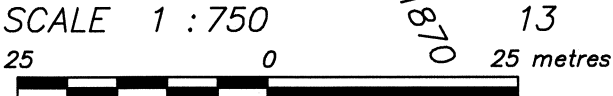
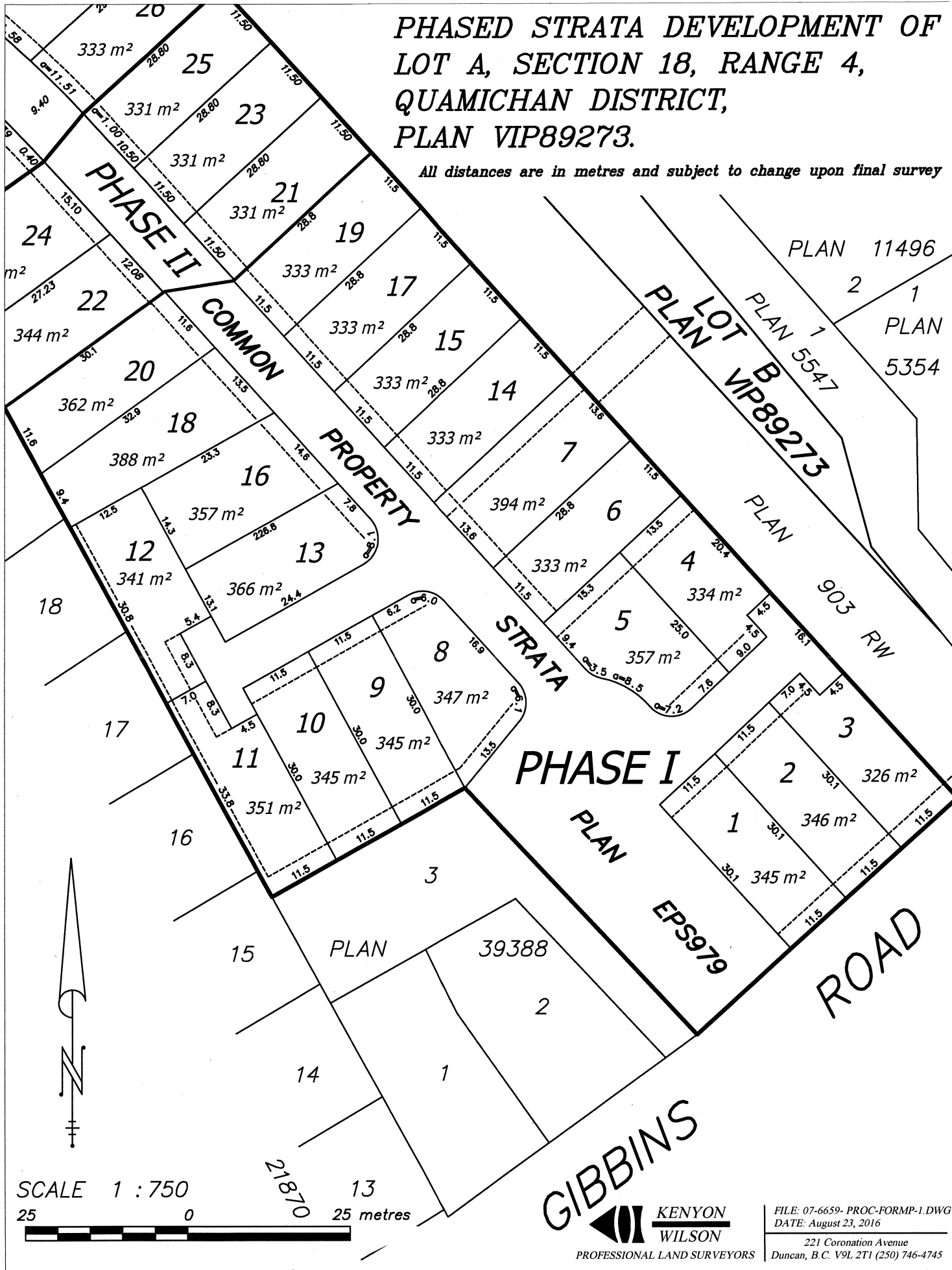


PHASED STRATA DEVELOPMENT OF LOT A, SECTION 18, RANGE 4, QUAMICHAN DISTRICT, PLAN VIP89273.

All distances are in metres and subject to change upon final survey

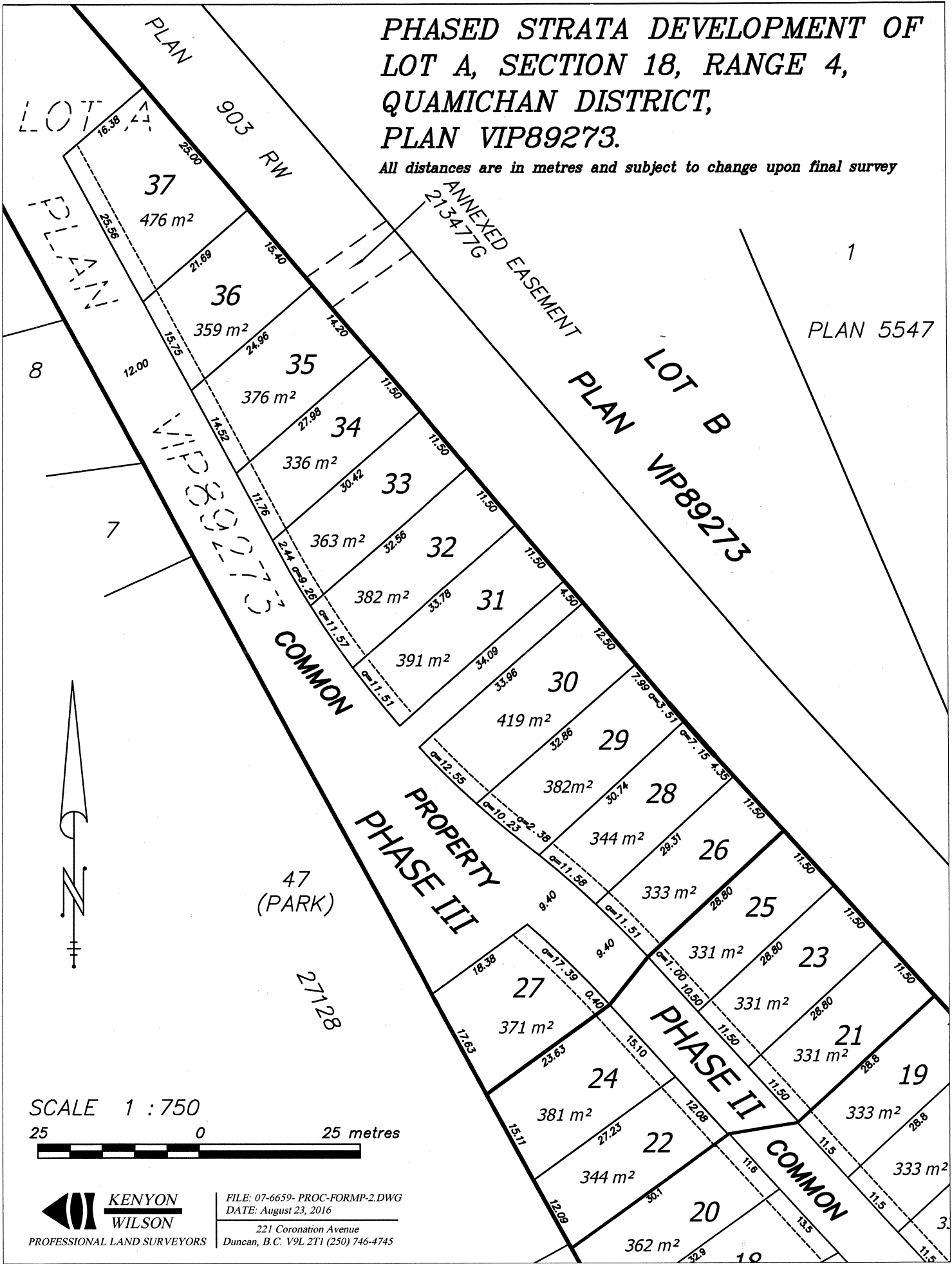


GIBBINS
KENYON WILSON
 PROFESSIONAL LAND SURVEYORS

FILE: 07-6659-PROC-FORMP-1.DWG
 DATE: August 23, 2016
 221 Coronation Avenue
 Duncan, B.C. V9L 2T1 (250) 746-4745

PHASED STRATA DEVELOPMENT OF LOT A, SECTION 18, RANGE 4, QUAMICHAN DISTRICT, PLAN VIP89273.

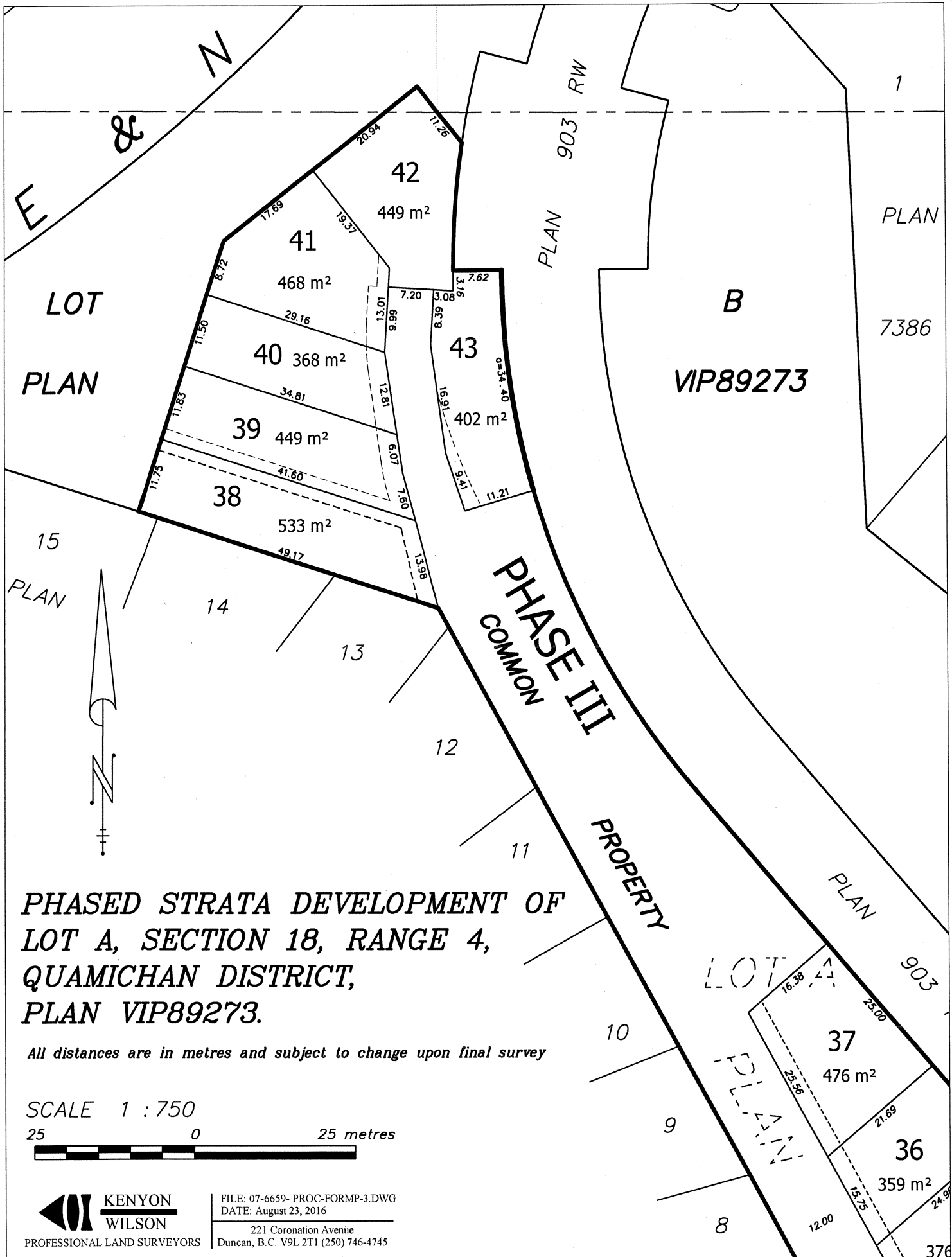
All distances are in metres and subject to change upon final survey



SCALE 1 : 750
25 0 25 metres

KENYON WILSON
PROFESSIONAL LAND SURVEYORS

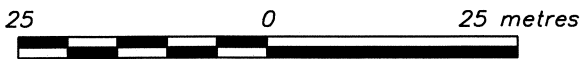
FILE: 07-6659-PROC-FORMP-2.DWG
DATE: August 23, 2016
221 Coronation Avenue
Duncan, B.C. V9L 2T1 (250) 746-4745



**PHASED STRATA DEVELOPMENT OF
LOT A, SECTION 18, RANGE 4,
QUAMICHAN DISTRICT,
PLAN VIP89273.**

All distances are in metres and subject to change upon final survey

SCALE 1 : 750



**KENYON
WILSON**
PROFESSIONAL LAND SURVEYORS

FILE: 07-6659- PROC-FORMP-3.DWG
DATE: August 23, 2016
221 Coronation Avenue
Duncan, B.C. V9L 2T1 (250) 746-4745